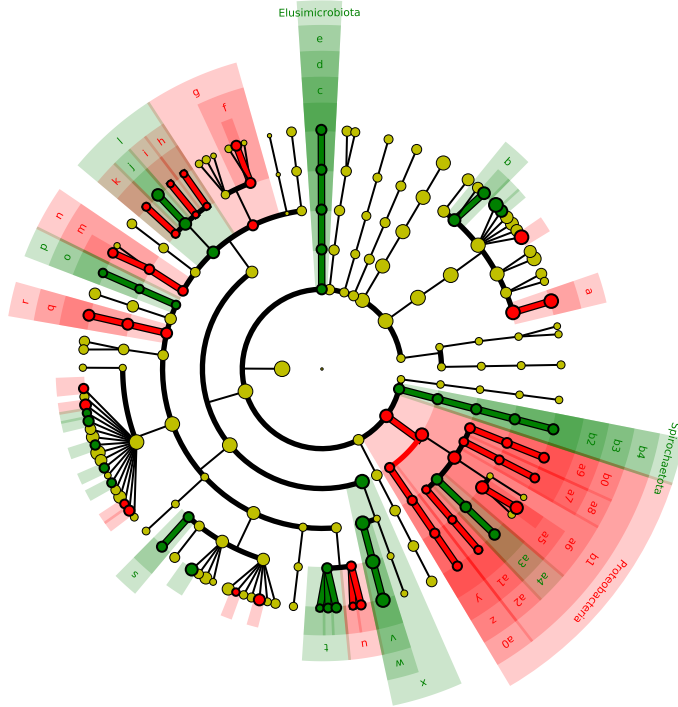


Cladogram



- | | |
|------------------------------|-------------------------|
| a: Bacteroidaceae | v: Acidaminococcaceae |
| b: Rikenellaceae | w: Acidaminococcales |
| c: Elusimicrobiaceae | x: Negativicutes |
| d: Elusimicrobiales | y: Mitochondria |
| e: Elusimicrobia | z: Rickettsiales |
| f: Erysipelatoclostridiaceae | a0: Alphaproteobacteria |
| g: Erysipelotrichales | a1: Aeromonadaceae |
| h: Aerococcaceae | a2: Aeromonadales |
| i: Enterococcaceae | a3: Sutterellaceae |
| j: Lactobacillaceae | a4: Burkholderiales |
| k: Streptococcaceae | a5: Enterobacteriaceae |
| l: Lactobacillales | a6: Enterobacteriales |
| m: Staphylococcaceae | a7: Pasteurellaceae |
| n: Staphylococcales | a8: Pasteurellales |
| o: Christensenellaceae | a9: Moraxellaceae |
| p: Christensenellales | b0: Pseudomonadales |
| q: Clostridia_vadinBB60 | b1: Gammaproteobacteria |
| r: Clostridia_vadinBB60 | b2: Spirochaetaceae |
| s: Butyricocccaceae | b3: Spirochaetales |
| t: Anaerovoracaceae | b4: Spirochaetia |
| u: Peptostreptococcaceae | |